

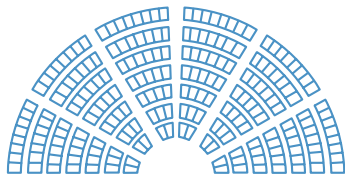
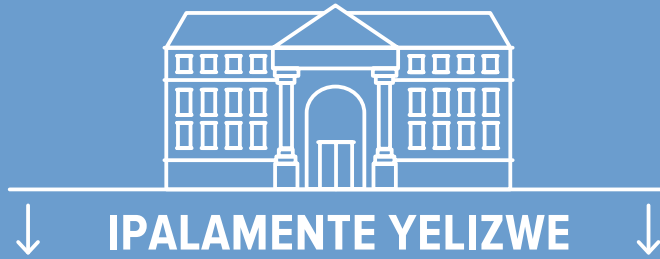
ISIKHOKELO ESIFUTSHANE

**kwiZindlu Zowiso-mthetho Neenkqubo Zowiso-mthetho
Ezichaphazela Uluntu kwiMigodi Emzantsi Afrika**

iProjekthi i-Mining Communities Matter

Ngokubambisana neBench Marks Foundation, iBafokeng Land Buyers' Association kunye neActionaid South Africa

IZISEKO ZOWISO-MTHETHO



iNdlu Yowiso-Mthetho Yesizwe (National Assembly)

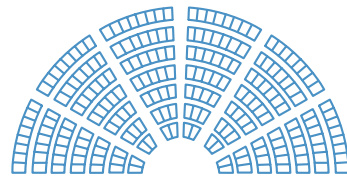


400 Amalungu angama-400

Ikhethwe ukuba imele abantu kwaye iqinisekise ulawulo ngabantu phantsi koMgaqo-siseko.

AMANDLA

- Ukulungisa uMgaqo-siseko
- Ukuwisa umthetho
- Ukunika igunya lokuwisa umthetho kuso nasiphi na esinye isiseko sowiso-mthetho
- Ukongamela onke amaziko karhulumente, eqinisekisa ukuba ayaphendula



Ibhunga Lamaphondo Lezwelonke (National Council of Provinces)



Amalungu angama-90

Ukumela amaphondo ukuze aqinisekise ukuba iimfuno zawo zithathelwa ingqalelo kwinqanaba likazwelonke likarhulumente.

AMANDLA

- Ukuthatha inxaxheba kulungiso loMgaqo-siseko
- Ukuwisa umthetho
- Ukuqwalasela imithetho ewiswe yiNdlu yoWiso-mthetho yeSizwe
- Ukuyalela amagosa ukuba aye kwiintlanganiso ze-NCOP okanye zeekomiti zayo

II-OFSI ZENTANDO YENINZI ZEPALAMENTE

iPalamente yelizwe iseke ii-ofisi zentando yeninzi kumaphondo aseNtshona-Koloni, eMntla- Ntshona, eLimpopo kunye nase Mpuma Ntshona, ukunceda ukubandakanya uluntu.

lidilesi kunye neenkukacha zoqhagamshelwano nezi-ofisi zifumaneka apha:

<https://www.parliament.gov.za/parliamentary-democracy-offices>

INDIMA YEPALAMENTE YOKUBEKA ILISO

uMgaqo-siseko uyalela ukuba iPalamente ibeke esweni imisebenzi karhulumente. **Abaphathiswa kunye nooSekela baPhathiswa bayaphendula kwaye kufuneka banike "iingxelo ezigcweleyo rhoqo"** ngamasebe abo. Uluntu lwasezimayini kunye nee-NGO zinokuncedisa kulo msebenzi ngokunikela ngolwazi malunga nefuthe eluntwini, lomsebenzi wamasebe ahlukeneyo.

UKUNIKELA IINGXELO KUMALUNGU EPALAMENTE, AMALUNGU EPALAMENTE YEPHONDO KUNYE NEEKOMITI:

Uluntu kunye nee-NGO zinokwakha ubudlelwane kunye namalungu ePalamente, amalungu ePalamente yephondo kunye nabasenbenzi bazo ngokunika rhoqo ingxelo malunga nokwenzekayo kwiindawo abahlala kuzo. Oku kunokuba negalelo ekwenzeni izigqibo nasekusekweni kwemigaqo-nkqubo ngexesha elizayo.

- ▶ **Lonke ulwazi kufuneka lunikwe kafutshane nangokucacileyo.** Kufuneka kubelula kumalungu ePalamente okanye kumalungu ePalamente yephondo ukuzifunda iingxelo nokuthatha izigqibo malunga nazo.
- ▶ **Ingxelo inganikelwa kubasebenzi bePalamente, kwamalungu ePalamente okanye, kumalungu ePalamente yephondo ngokwawo ngo-WhatsApp okanye nge-imeyile.**
- ▶ **Qinisekisa ukuba amabango nezityholo zixhaswa ngengxelo ethembekileyo.** Zama ukucacisa ngokusebenzisa amanani, izixa neepesenti njalo njalo. Iingxelo ezingacacanga azenzi mahluko ungako.

Oku kulandelayo yimizekelo neengcebiso ngeendlela zokunika ingxelo ngokufanelekileyo:



UBUNGCINA NGEFOTO

Umzekelo, iifoto ezibonisa inkunkuma enetyhefu, iziphumo zovavanyo, njalo njalo. Iifoto ezicacileyo nezikhatshwa yinkcazelo emfutshane ecacileyo ziyanceda ukubeka uxinzelelo kunye nokubonelela ngolwazi.



IINGXAKI ZOLUNTU

Zama ukuhlala ucebisa amalungu ePalamente, amalungu ePalamente yephondo, abasebenzi okanye ikomiti ngeendlela ezilula abanokunceda ngazo kunye namanyathelo abanokuwathatha.



IINGXELO ZOPHANDO

Ezivela kuluntu, kwii-NGO, kwiidyunivesithi njalo njalo: Nikeza amanqaku amafutshane kwiphepha leziqulatho ukukhokela umfundi koko makajolise kuko xa efunda uxwebhu.



IZIPHAKAMISO ZOMGAQO NKQUBO

Chaza ngokuphumelela kweziphakamiso zakho apho zisetyenziswe khona luluntu, ngamaphondo okanye ngamazwe athile.



II-MAP EZIZOTYWE NGE-SATELLITE OKANYE NGESANDLA

Umzekelo, ezibonisa ukunwenwela komgodi kwindawo ehlala abantu. Ukunikezela ngobungqina kusoloko kulanceda ityala.



AMAXWEBHU

Ukusuka kubaphathi belo ziko, kwi-Bench Marks Foundation, kubameli be-ActionAid, i-MACUA, i-WAMUA kunye ne-BLBA.



IIKOMITI ZEMICIMBI YESEBE YEPALAMENTE

Iikomiti zihlangana kanye ngeveki xa iPalamente ivuliwe. Ulwazi kunye namaxwebhu anxulumene nemisebenzi yeekomiti afumaneka apha:

<https://pmg.org.za/committees>

<https://www.gov.za/about-government/parliamentary-committees>

<https://www.parliament.gov.za/minutes-proceedings>

<https://www.parliament.gov.za/taled-papers>

Le ingenzantsi yimizekelo yeentlobo zemiba enokuziswa kwikomiti nganye.

IIKOMITI ZENDLU YOWISO-MTHETHO YESIZWE

IKOMITI YEMITHOMBO YEZIMBIWA NAMANDLA

Amalungelo ezokumbiwa • Iimpembelelo kwimvelo • Ukongezwa kwexabiso lwezimbiwa • Imbuyekezo kwabala- hlekelwe yimihlaba
Amalungelo abasebenzi emigodini • Iingxaki ngezicwangciso zentlalo kunye nezabasebenzi • Ukususwa okunyanzelisiweyo • Ukususwa kwamangcwaba • Ukogrogriswa kwamatsha-ntliziyo

IKOMITI YEZEMVELO, AMAHLATHI NOKULOBA

Uvavanyo lweempembelelo kwimvelo (Environmental Impact Assessments) kunye nezicwangciso nemiba ngolawulo lwemvelo (Environmental Management Plans & Issues) • Ezempilo • Amanzi aselwayo, imilambo, amachibi, amadami • Umhlaba • Umoya • Izityalo nemfuyo • Iilayisenisi zokusetyenziswa kwamanzi

IKOMITI YEZEMPILO

Izifo kunye neemeko zempilo, umzekelo: isifuba sombefu, ukugula kwemitha, isifo somhlaza, i-asbestosis, isifo seengcongconi (silicosis), isifo sephepha • Intsholongwane kaGawulayo / uGawulayo kunye nezinye izifo ezisulela ngokulalana • I-Methemoglobinemia • Ukunqongophala kweenkonzo zempilo ezifanelekileyo ngokunxulumene noku kungentla

IKOMITI YEZOLIMO, UKUBUYISWA KWEMIHLABA NOPHuhliso LWASEMAPHANDLENI

Ukuphulukana nemihlaba yokulima namadlelo • Iingxaki malunga nemihlaba yembuyekezo emva kokufuduswa • Impilo yezityalo kunye nemfuyo • Iprojekthi zophuhliso okanye zoluntu ezinxulumene nomgodi

IKOMITI YEZEZINDLU, AMANZI AND NOCOCEKO

Uvavanyo lweempembelelo kwimvelo, kunye nezicwangciso nemiba yolawulo lwemvelo • Ezempilo • Amanzi aselwayo, imilambo, amachibi, amadami • Umhlaba • Umoya • Izityalo nemfuyo • Iilayisenisi zokusetyenziswa kwamanzi

IKOMITI YOLAWULO NEMICIMBI YEENKOSI

Ukuphathwa gadalala kweenkokheli zomthonyama • Iingxaki ezinxulumene nomhlaba wookhokho • Urhwaphilizo lweenkokheli zomthonyama

IKOMITI YEMFUNDO ESISISEKO

Ukususwa / ukulawula okanye ukugrogrisa ngokususwa kwezikolo • Ukuqhushumba emigodini okuphazamisa isikolo okanye okonakalisa izakhiwo zesikolo • Ukongcoliswa kwamanzi ngenxa yokomba – amanzi ezikolo ezikufutshane nemigodo afanele ukuvavanywa rhoqo

IKOMITI YABASETYHINI, ULUTSHA NABANTU ABAKHUBAZEKILEYO

Iimpembelelo zokumbiwa kwabasetyhini, umzekelo • Ukuphulukana nemithombo yamanzi • Ucalucalulo okanye ukuhlukunyezwa kwabasetyhini • Ukuphuma kwesisu • Izigulo ngenxa yamanzi angcolileyo • Ukungabhatalwa xa abasebenzi bomgodi begula • Uku-nqongophala kwemisebenzi kulutsha nakubakhubazekileyo • Ingxaki ngokunxulumene nezikolo

IKOMITI YEZENGQESHO NABASEBENZI

Ucalucalulo ngokunxulumene nemisebenzi yezemigodi • Ukutyeshelwa kwamalungelo abasebenzi • Imiba yezempilo neyokhuseleko lwabasebenzi • Ukuhlukunyezwa kwabasetyhini • Ukunqongophala kwamathuba okufunda nawengqesho abenokukhokelela kwimisebenzi yemigodi • Iinguqu ezikhokela kuluntu olungena-khabhon (a carbon-free society)

IKOMITI YOBUDLELWANE NEZIZWE NGEZIZWE NENTSEBENZISWANO

Iinkxalabo malunga neenkampani zamanye amazwe zingaxelwa kule Komiti

IKOMITI YEZORHWEBO NOSHISHINO

Iinkxalabo malunga neenkampani zingaxelwa kule Komiti

IKOMITI YAMAPOLISA

Ukuphathwa gadalala kunye nokugrogriswa ngamapolisa • Urhwaphilizo ngamapolisa

IKOMITI YEMISEBENZI KARHULUMENTE NEZISEKO ZOPHUHLISO

Amadami anika uninzi lwamanzi awo kwimigodi, engawabeli abahlali • Iingxaki malunga needlela neeblorho ezunxulumene nemigodi

IIKOMITI ZEBHUNGA LAMAPHONDO LEZWELONKE (i-NCOP)

IKOMITI EKHETEKILEYO YOKUBUYISWA KWEMIHLABA, IMVELO, IMITHOMBO YEZAMBIWA NAMANDLA

Amalungelo ezimbiwa • Iimpembelelo kwimvelo – amanzi, imihlaba, umoya, izityalo, imfuyo • Impilo • Ukongezwa kwexabiso lwezambiwa • Ukubuyekeza kwabalalelelwe yimihlaba • Amalungelo abasebenzi • Amahlelo malunga noluntu nabasebenzi • Ukususwa ngokunyanzelwa • Ukugrogriswa kwamatsha-ntliziyo • Uvavanyo lweemvelo (Environmental Assessments) kunye nezicwangciso nemiba ngolawulo lwemvelo (Environmental Management Plans & Issues) • Ukwaphulwa kwemithetho malunga nemvelo

IKOMITI EKHETEKILEYO YENKONZO ZEMPILO NEZOLUNTU

Izifo kunye neemeko zempilo esinje ngesifuba sombefu, ukugula kwemisebe, isifo somhlaza, i-asbestosis, isifo sephepha • Intsholongwane kaGawulayo / uGawulayo kunye nezinye izifo ezisulela ngokulalana • i-Methemoglobinemia • Ukunqongophala kweenkonzo zempilo ezifanelekileyo ngokunxulumene noku kungentla

IKOMITI EKHETEKILEYO YOLAWULO LWENTSEBENZISWANO, IMICIMBI YEENKOSI, AMANZI, UCOCEKO NEZINDLU

Ukuphathwa gadalala kweenkokheli zomthonyama • Iingxaki ezinxulumene nemihlaba yookhokho • Urhwaphilizo lweenkokheli zomthonyama • Umonakalo kwizindlu ngenxa yeziqhushumbisi zasemigodini • Ukungabikho kweziseko zezindlu kwiindawo zemfuduko • Ukungcoliswa kwamanzi • Ulwakhiwo olugwenxa lwezindlu zangasese neziseko zophuhliso kwiindawo zemfuduko • Ezinye iingxaki malunga ngezindlu

IKOMITI EKHETEKILEYO YEZOTHUTHO, ULAWULO LWENKONZO YOLUNTU, IMISEBENZI YOLUNTU NEZISEKO ZOPHUHLISO

Amadami anika uninzi lwamanzi awo kwimigodi, engawabeli abahlali • Iingxaki malunga neziseko zophuhliso ezinxulumene nemigodi

IKOMITI EKHETEKILEYO YEMFUNDO, UBUCHWEPHESHE, IMIDLALO, NENKCUBEKO

Ukususwa / ukulwalwa okanye ukugrogrisa ukususwa kwezikolo • Ukuqhushumba emigodini okuphazamisa isikolo okanye okonakalisa izakhiwo zesikolo • Ukongcoliswa kwamanzi ngenxa yokomba – amanzi ezikolo ezikufutshane nemigodi afanele ukuvavanywa rhoqo

IINDLELA EZISESIKWENI ZOKUMELA ULUNTU

UKWENZIWA KWEBANGO KWIKOMITI

Ingxelo kufuneka icace ivakale lula kumalungu ekomiti. Inokuxhaswa yinkcazo ngomlomo. Ingeniswa kunobhala wekomiti. Olunye ulwazi lufumaneka apha <https://www.parliament.gov.za/submissions>

OKUBALULEKILEYO OKUMELWE KUQULATHWE YINGXELO EBHALIWEYO XA INGENISWA:

- *Biza iKomiti ngegama layo elipheleleyo*
 - *Igama lomthetho oyilwayo okanye umba obhekisa kuwo*
 - *Faka igama, isikhundla neenckukacha zoqhagamshelwano zalowo wenza ingxelo*
 - *Igama lombutho / amagama emibutho*
 - *Faka isicelo sokuthetha neKomiti ukuba uyathanda*
- Umxholo wengxelo ebhaliweyo:**
- *Gxila ekubhekiseni kwisikhalazo okanye kuhlalutyo lomthetho oyilwayo, kunokuba utyhole okanye udelele abantu*
 - *Cacisa kafutshane, ngokuchanekileyo – ngena emxholweni ungabhali into ende*
 - *Xa se uthethile ngenqaku elithile, qhubeka*
 - *Sebenzisa ubungqina ukuxhasa uhlalutyo lwakho. Kananjalo ungabhekisa nakwabafundi, amalungu oluntu, izifundiswa, ezinye ii-NGO, amaxwebhu karhulumente kunye nengxelo ngalo mbandela okanye ngomthetho oyilwayo*
 - *Sebenzisa amagama ahloniphayo*
 - *Qinisekisa ukuba ungeniso lwakho luyahambelana nesihloko okanye nomthetho oyilwayo*
 - *Ukuququmbela: Shwankathela amanqaku aphambili engxelo yakho*
 - *lingcebiso: Nikeza ngeziphakamiso ngemigaqo-nkqubo ethile, ngomxholo womthetho oyilwayo, okanye ngoko ikomiti imelwe kukukwenza ngokunxulumene nesihloko*

IINGXELO ZOMLOMO:

- *Ezi ndidi zeengxelo zezokuxhasa ungeniso olubhaliweyo*
- *Unobhala weKomiti uyakulichaza ixesha elifanelekileyo lokungeniswa kweengxelo zomlomo*
- *Izinto ezijongwayo njengomboniso wePowerPoint, zinokuba luncedo xa zicacile kwaye zingena emxholweni*
- *Kungasetyenziswa naluphi na ulwimi olusemthethweni lwaseMzantsi Afrika, kodwa unobhala weKomiti kufuneka aziswe ngethuba ukuze alungiselele itoliki*
- *Iividiyo, okurekhodiweyo kunye nokukhutshelwa kokurekhodiweyo okuvela kolunye ungeniso kunokusetyenziswa ukuncedisa kumalungiselelo olungeniso*

UKUTHATHA INXAXHEBA KWIINDIBANO ZOVAKALISO-ZIMVO

Iindibano zovakaliso-zimvo amaxesha amaninzi ziqhutywa ziikomiti zowiso-mthetho zikazwe-lonke kunye nezephondo. Ubunizi, zijolise kumthetho oyilwayo othile, kodwa zinokuba malunga nomcimbi okanye isihloko esithile; njengezikhokelo zezimali. Uninzi lweeNGO ezibandakanya i-ActionAid South Africa, i-Bench Marks Foundation, kunye noMbutho wabaThengi baBafokeng (Bafokeng Land Buyers' Association), kunye namalungu oluntu lwasezimayini bakhe bayithatha inxaxheba kwindibano zovakaliso-zimvo ngaphambili.

UKUFAKA UXWEBHU LWEZIKHALAZO (PETITION)

Uxwebhu lwezikhalazo sisicelo esisemthethweni esiya kwiPalamente ukuba ingenelele kumcimbi oxhala-bisayo. NgokomGaqo-siseko, "**Wonke umntu unelungelo lokuhlangana nabanye, lokuqhankqalaza kunye nokungenisa izecelo ngenzolo engaxhobanga.**"

UKUBHALWA NOKUFAKWA KWAMAXWEBHU EZIKHALAZO

Lamaxwebhu kufuneka ebhalwe ngononophelo, ngamazwi akhethiweyo. Nanga amanyathelo ongawathatha ukuqinisekisa ukuba isicelo sakho siyamkelwa nguNobhala wePalamente.



WUXELE NGOKUCACILEYO UMBA

Ngaphambi kokuba uqale ngesikhalazo, qiniseka ukuba uwuchazae ngokucacileyo umcimbi ofuna urhulumente angenelele kuwo.



CHAZA UKUBA NGUBANI UMKHALAZI/ABAKHALAZI, NALOWO UBHEKISE KUYE

Faka igama / amagama kunye neenkukacha zoqhagamshelwano zomfaki-sikhalazo / zabafaki-sikhalazo, ucacise gca ukuba ngubani lo mntu sibhekiswa kuye isicelo.



FAKA ISIHLOKO

Xela ngokucacileyo ukuba yintoni na isicelo sakho.



ULWIMI / IILWIMI

Uxwebhu lwezikhalazo lungaba ngalo naluphi na ulwimi olusemthethweni lwase Mzantsi Afrika kwaye akufuneki ukuba luqulathe amazwi angafanelekanga okanye angenantlonelo.



YENZA UKUBA ZITYIKITYWE

Izikhalazo kufuneka zisoloko zityikitywe ngumfaki-sicelo ngokwakhe. (Ngaphandle kokuba uSomlomo okanye uSihlalo wenze sigqibo simbi.)



QWALASELA UBUME BOXHWEBHU

Izicelo kufuneka zenziwe ngononophelo, kusestyenziswe amagama ahluziweyo. Ekubhaleni isicelo, ungacela uncedo lwelungu lePalamente okanye abasebenzi belungu lePalamente.



FUNA INKXASO YELUNGU LEPALAMENTE

Udinga ilungu lePalamente ukuba liluxhase uxwebhu lwakho lwezikhalazo kuba zonke izikhalazo zimelwe ukungeniswa ngokusemthethweni lilungu lePalamente.



LUNGENISE UXWEBHU LWEZIKHALAZO

Izikhalazo zifakwa kuNobhala wePalamente oziphononongayo emva koko athathe isigqibo sokuba zisiwe kwi-Ndlu yoWiso-mthetho Yesizwe okanye kwi-Bhunga lamaPhondo leZwelonke.

INKQUBO YOWISO-MTHETHO

Xa kusekwa umthetho omtsha, lomthetho ubizwa ngokuba gumthetho oyilwayo (i-Bill). Lemithetho ingeniswa kuzo zombini izindlu zePalamente kazwelonke. Phambi kokuba umthetho oyilwayo waziswe ePalamente, kusenokubakho amaphepha ogayo-zimvo nawengcaciso yomgaqo-nkqubo aqulunqwe liSebe elifanelekileyo.

AMAPHEPHA OGAYO-ZIMVO

Iphepha logayo-zimvo luxwebhu olucacisa imiba enxulumene nomthetho oyilwayo. Ipapashwa ukuze uluntu luvakalise izimvo malunga nalo.

IPHEPHA LENGCACISO YOMGAQO-NKQUBO

Iphepha lengcaciso yomgaqo-nkqubo luhlobo lwephepha logayo-zimvo oluhluziweyo emva kwezimvo zoluntu. Amalungu ePalamente anokufakelela izilungiso kwaye aliphindisele iphepha lengcaciso yomgaqo-nkqubo ukuba lihlolwe kwakhona.

UKWAZISWA KOMTHETHO OYILWAYO EPALAMENTE

Ndlu yoWiso-mthetho yeSizwe:

Yonke imithetho eyilwayo engachaphazeli iphondo iziswa apha phantsi kwesiqendu se75 soMgaqo-siseko

iBhunga lamaPhondo leZwelonke (NCOP):

Umthetho oyilwayo waziswa kwi-NCOP ukuba ngaba uchaphazela amaphondo okanye iphondo elithile, phantsi kwesiqendu se-76 soMgaqo-siseko

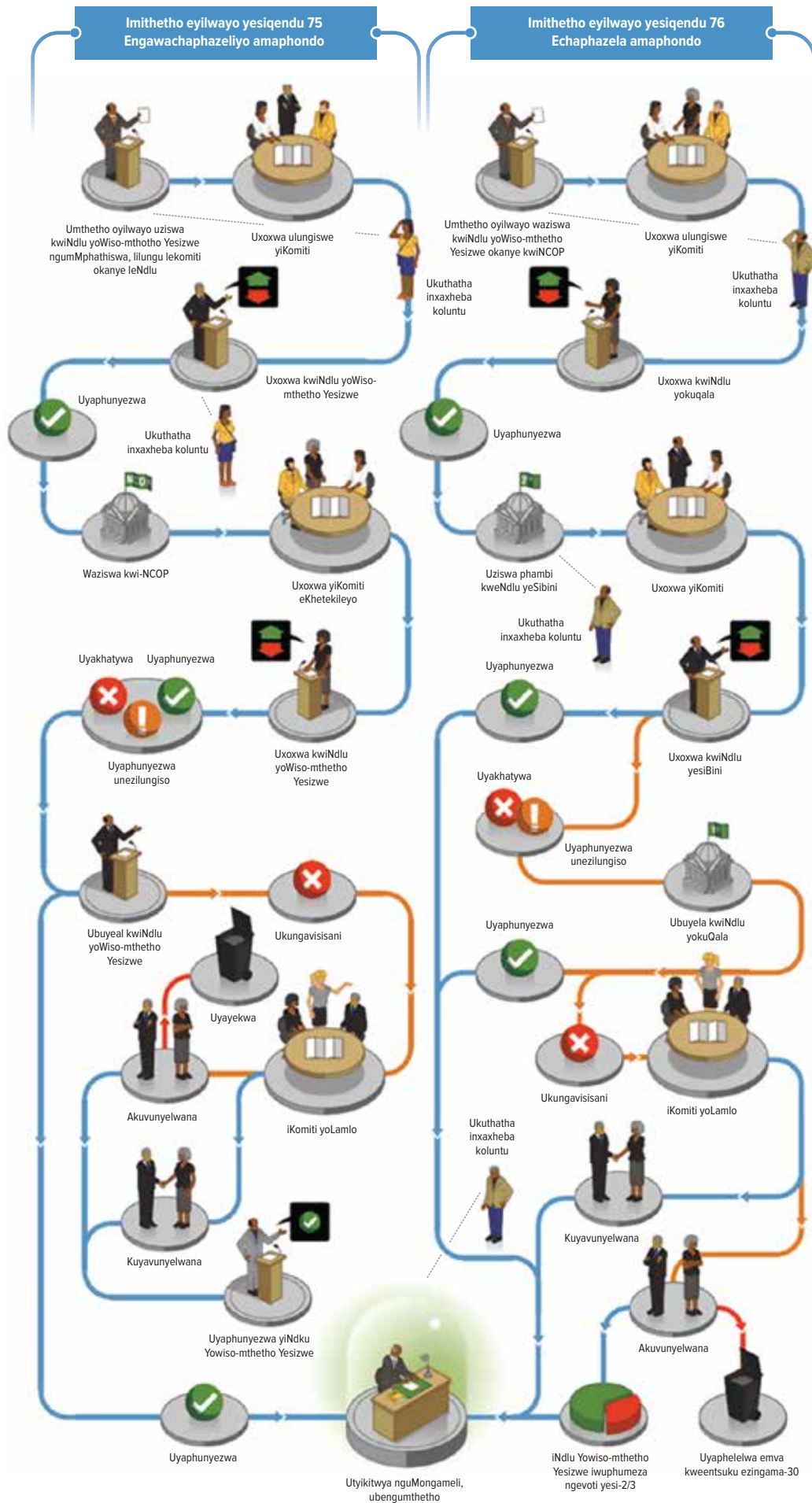
Xa sewaziswe kwiNdlu efanelekileyo, uthunyelwa kwiKomiti efanelekileyo ukuze iwuqwalasele ze ipapashwe kwiGazethi kaRhulumente ukuze uluntu luvakalise izimvo zalo

IKomiti ixoxa ngomthetho oyilwayo, ifake nezilungiso

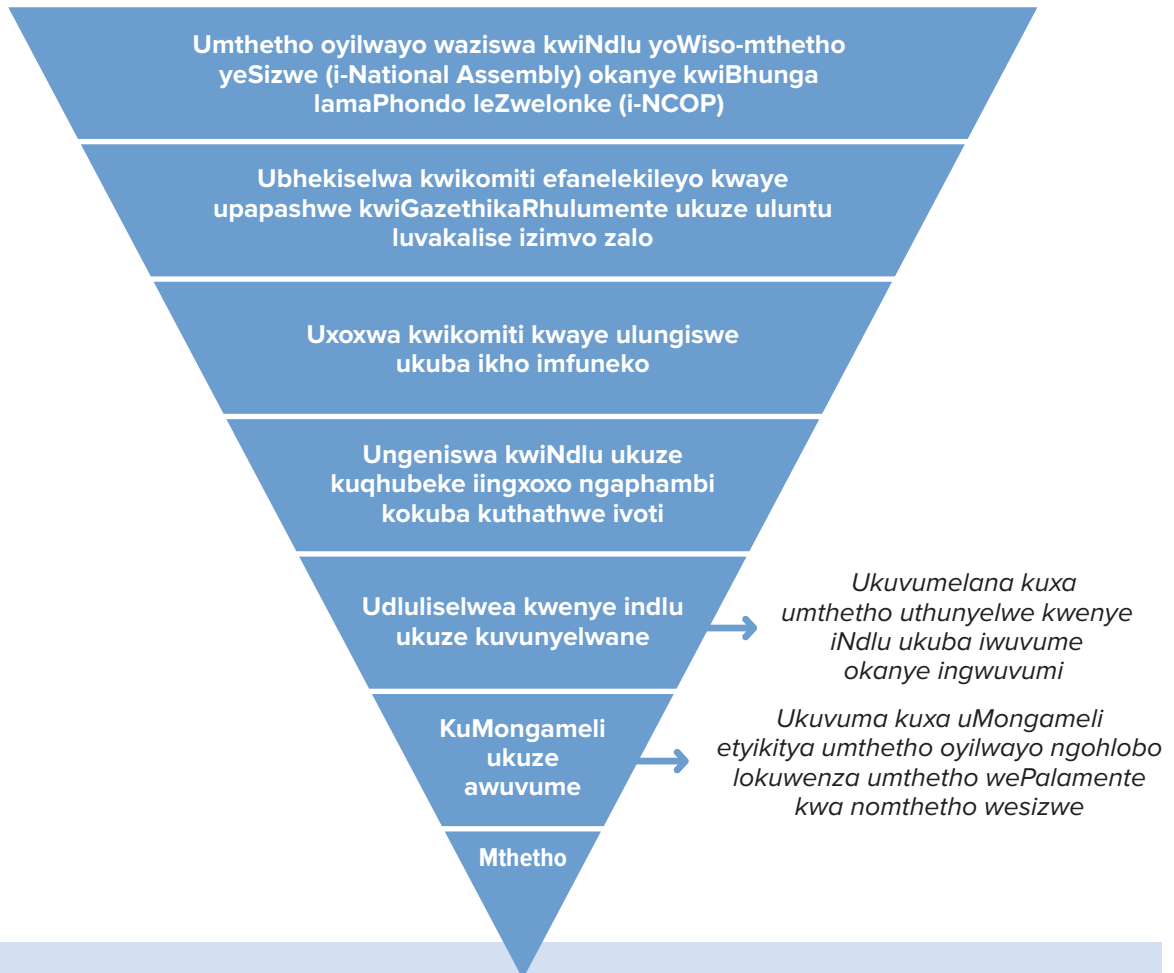
Lo mthetho uyilwayo ubuyiselwa kwiBhunga lamaPhondo leZwelonke elipheleleyo okanye kwiNdlu yoWiso-mthetho yeSizwe ngenjongo yokuba kuxoxwe kuvotwe malunga nawo

Lo mthetho uyilwayo uthunyelwa kwenye indlu yePalamente ukuba uyihlaziyiwe kwaye kuvotwe

Lo mthetho uyilwayo uthunyelwa kuMongameli ukuze awuvume (nogokuwutyikitya)



WENZIWA NJANI UMTHETHO EMZANTSI AFRIKA (IPALAMENTE YESIZWE)



IShedyuli 4 yoMgaqo-siseko woMzantsi Afrika idwelisa imimandla apho iPalamente yeSizwe kunye neziNdlu zoWiso-mthetho zamaPhondo zinokuwuphumeza khona umthetho. Inamacandelo amabini: Icandelo A libandakanya iindawo ezinjengehlathi, ezolimo, imiba yenkcubeko, okusingqongileyo kunye nolawulo lweentlekele, umthetho wemveli kunye nomthetho wesintu. Icandelo B ligubungela iindawo ezifana nongcoliseko lomoya, imigaqo yokwakha, ukhenketho lwasekhaya kunye neenkonzo zempilo zikamasipala, kunye neenkonzo zamanzi nococeko.

IShedyuli yesi-5 yoMgaqo-siseko idwelisa imimandla yoKwazi koMthetho wePhondo kuphela. Le yeyona mimandla ingabalulekanga kangako kwimithetho, kodwa ibandakanya ungcoliseko lwengxolo, iindawo zokulahla inkunkuma kunye nemicimbi yenkcubeko yephondo.

Ulwazi oluthe kratya malunga nesi sihloko lunokufumaneka kwezi ndawo zilandelayo:

<https://www.gov.za/documents/constitution-republic-south-africa-1996-schedule-4-functional-areas-concurrent-national>

<https://www.gov.za/documents/constitution-republic-south-africa-1996-schedule-5-functional-areas-exclusive-provincial>

ULWAZI KWI-INTANETHI

- 1 IQELA LOKUQWALASELA I-PARLIAMENTE (PARLIAMENTARY MONITORING GROUP /PMG)**
linewebhusayithi enoncedo kakhulu (www.pmg.org.za). Ngayo nayiphi na imibuzo malunga nePalamente, ngeenkqubo zepalamente, imizuzu yeendibano (minutes of sessions) njalo njalo.

 - Nasi isixhobo esenziwa yi-PMG malunga nenkqubo yowiso-mthetho:
<https://pmg.org.za/page/legislative-process>
 - Uxwebhu oluhlaziye inkqubo yowiso-mthetho ePalamente luyafumaneka apha:
<https://pmg-assets.s3-website-eu-west-1.amazonaws.com/docs/100903legislative-edit.pdf>
 - Imithetho eyilwayo ezayo kunye nezikhalazo ezifakwe phambi kwePalamente zingafunyanwa apha:
<https://pmg.org.za/page/parliamentary-programme>
 - Iingxelo zekomiti ziyafumaneka apha: <https://pmg.org.za/taled-committee-reports/>
- 2 IPALAMENTE YESIZWE** inala maqonga eendaba alandelayo:

 - iPalamente isasazwa kumabonwa-kude kwi-DSTV 408
 - ku-Twitter: <https://twitter.com/ParliamentofRSA> (Handle: @ParliamentofRSA)
 - ku-YouTube: <https://www.youtube.com/user/ParliamentofRSA>
 - ku-Facebook: <https://www.facebook.com/ParliamentofRSA>
 - I-webhusayithi yePalamente kaZwelonke yile: <https://www.parliament.gov.za/>
- 3 UMGAQO-SISEKO WERIPHABHLIKI YOMZANTSI AFRIKA** unika ulwazi olubalulekileyo malunga nezindlu zowiso-mthetho, iinkqubo zazo kunye nokuwiswa komthetho. Ifumaneka apha:
<https://www.gov.za/documents/constitution/constitution-republic-south-africa-1996-1>
- 4 II-WEBHUSAYITHI ZEZINDLU ZOWISO-MTHETHO ZAMAPHONDO:**

 - Indlu yoWiso-mthetho yePhondo leMpuma-Koloni: <http://www.eclegislature.gov.za/>
 - Indlu yoWiso-mthetho yePhondo laseFreyistata: <http://www.fsl.gov.za/>
 - Indlu yoWiso-mthetho yePhondo laseGauteng: <http://gpl.gov.za/>
 - Indlu yoWiso-mthetho yePhondo laKwaZulu-Natala: <https://kznlegislature.gov.za/>
 - Indlu yoWiso-mthetho yePhondo laseLimpopo: <http://www.limpopoleg.gov.za/>
 - Indlu yoWiso-mthetho yePhondo laseMpumalanga: <http://www.mpuleg.gov.za/>
 - iNdlu yoWiso-mthetho yePhondo laseMntla-Ntshona: <https://nwpl.gov.za/>
 - iNdlu yoWiso-mthetho yePhondo loMntla-Koloni: <https://www.ncpleg.gov.za/>
 - Indlu yoWiso-mthetho yePhondo leNtshona -Koloni: <https://www.wcpp.gov.za/>
- 5 INKQUBO I-CLIMATE REALITY PROJECT** inezixhobo ezilungileyo kakhulu phantsi kwenkqubo yayo i-Action 24 Project: <http://climatereality.co.za/resource-action-24/>
- 6 i-DULLAH OMAR INSTITUTE** ekwiDyunivesithi yaseNtshona-Koloni inezixhobo ezibalaseleyo, ezibandakanya:

 - i-Parlybeat, eliphapha-ncwadi elithetha ngoko kwenzekayo ePalamente:
<https://dullahomarainstitute.org.za/women-and-democracy/parlybeat>
 - i-Parliament Watch okanye i-Parlywatch, ethi yona iphonononge umsebenzi wePalamente:
<https://dullahomarainstitute.org.za/women-and-democracy/parliament-watch>
 - Putting People in the People's Parliament-ulwazi oluninzi luyafumaneka apha:
<https://dullahomarainstitute.org.za/women-and-democracy/putting-people-in-the-peoples-parliament>
- 7 I-CENTRE FOR APPLIED LEGAL STUDIES (IZIKO NGEZOKUSETYENZISWA KWEZIFUNDO NGOMTHETHO)**
ekwiDyunivesithi yaseWitwatersrand inezixhobo eziliqela ezibandakanya izingeniso ePalamente ngemiba yezemvelo nezimbiwa: <https://www.wits.ac.za/cals/our-programmes/environmental-justice/>
- 8 i-LAND & ACCOUNTABILITY RESEARCH CENTRE (i-LARC)**
ekwiDyunivesithi yaseKapa inezixhobo ezininzi, eziquka isikhokelo sokwenza ungeniso kunye nemizekelo yezicelo ezingeniswayo: <http://www.larc.uct.ac.za/submissions>



act:onaid



FORDFOUNDATION



HEINRICH BÖLL STIFTUNG
SOUTHERN AFRICA



Olu xwebhu lwenziwe ngoncedo
lwe-European Union



IANRA
International Alliance on Natural Resources in Africa

International Alliance on Natural Resources in Africa (IANRA)

Idilesi: The Main Change, Office 301C, 20 Kruger Street, Johannesburg 2094, South Africa

i-Webhusayithi: www.ianra.org | Twitter: @IanraAfrica

i-Imeyile: info@ianra.org | Ifowuni: +27 (0) 11 056 9748

Ukuba akukho mithetho ilungileyo nesebenzayo, ze ningayichukumisi imithombo yethu yezemvelo.