

IZIQONDISO EZINCISHIWE

**Zesishayamthetho Kanye Nezinqubo Zesishayamthetho
Ezithinta Imiphakathi Yasezimayini Eningizimu Afrika**

iProjekthi Emayelana Nokubalukeka Kwemiphakathi Yasezimayini

Ngokubambisana neBenchmarks Foundation, Bafokeng Land Buyers' Association kanye neActionAid South Africa

IZINHLAKA ZESISHAYAMTHETHO



IPHALAMENDE LIKAZWELONKE



iNdlu yesiShayamthetho Kazwelonke (National Assembly)

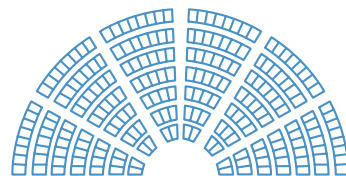


Amalungu angama-400

Leliphalamende liye lakhethwa ukuba limelele abantu futhi liqinisekise ukuholwa kwabantu ngaphansi koMthethosisekelo.

AMANDLA

- ukuchibiyela uMthethosisekelo
- ukuphasisa umthetho
- Ukudlulisela amandla omthetho kwezinye izinhlaka zesishayamthetho
- Ukwengamela zonke izinhlangano zikaHulumeni nokuqinisekisa ukusebenza kwazo



uMkhandlu kaZwelonke weziFundazwe (National Council of Provinces)



Amalungu angama-90

Umelela izifundazwe ukuze iqinisekise ukuthi izimfuno zezifundazwe ziyabhekelwa ohlakeni lukahulumeni kazwelonke.

AMANDLA

- ibamba iqhaza ekuchibiyeleni kweMthethosisekelo
- ukuphasisa umthetho
- ukucubungula umthetho ophasiswe yiNdlu yesiShayamthetho Kazwelonke
- ukuqinisekisa ukuthi wonke amalungu abakhona emihlanganweni ye-NCOP noma kumaKomiti alo

IHHOVISI LEPHALAMENDE ELIBHEKELE INTANDO YENINGI

IPhalamende likaZwelonke liyelasungula iHhovisi lePhalamende elibhekele intando yeningi ezifundazweni zase Entshonalanga Kapa, eKapa elisenyakatho, eLimpopo kanye naseNyakatho Ntshonalanga ukusiza ngokubandakanye umphakathi ezinqumeni zephalamende.

Ikheli neminingwane yokuthintana nalamahhovisi itholakala ku:
<https://www.parliament.gov.za/parliamentary-democracy-offices>

UMSEBENZI WEPHALAMENDE WOKWENGAMELA

uMthethosisekelo lidinga ukuba iphalamende lengamele ukusebenza kwezwe. oNgqongqoshe kanye namaphini oNgqongqoshe kumele babe nokukwazi ukulandisa ngokugcwele kanye nokubika njalo ngepinyango abayengamele. Izinhlangano ezingekho ngaphansi kukahulumeni zisiza ngokudlulisela ukwazisa ngemiphumela yokusebenza kweminyango kaHulumeni ehluhahlukene emphakathini.

UKUHLINZEKA UKWAZISA OKUWUSIZO EMALUNGWINI EPHALAMENDE, EMALUNGWINI ESISHAYAMTHETHO ESIFUNDAZWE KANYE NASEMAKOMITINI:

Imiphakathi kanye nezinhlangano ezingekho ngaphansi kukaHulumeni ziyakwazi ukwakha ubudlelwano namalungu ephalamende, amalungu esishayamthetho esifundazwe kanye nabasebenzi babo, Ngokubahlizekela ngokwaziswa mayelana nokuthi kwenzekani emphakathini yabo. Lokhu kungasiza kube nemithelela ekwenzeni izinqumo kanye nezinqubomigomo yezikhathi ezizayo. Konke ukwaziswa okuhlizekelwe kumelwe kube okucacile nokufushanisiwe ngangokunokwenzeka.

- ▶ Amalungu ePhalamende/amalungu esishayamthetho esifundazwe kumelwe akwazi ukufunda lokhu kwaziswa kalula aphinde anqume okuzokwenziwa ngalokhu kwaziswa.
- ▶ Ukwaziswa kungahlizekelwa ngokusebenzisa uWhatsApp noma nge-Email kubasebenzi bamalunga noma uthumele emalungwini ePhalamende/amalungu esishayamthetho esifundazwe ngokuqondile.
- ▶ Qiniseka ukuthi ukumangalela kanye necala elibekwayo linobufakazi obuthembekile. Zama uku-chaza ngokucacile ngangokunokwenzeka ngokusebenzisa izinombolo, amanani kanye nama-photosenti. Izitanti- mende ezingacacile noma ezingazwakali kahle angeke zibe nomthelela omuhle.

Ngezansi kunezibonelo nezeluleko ngezindlela zokuhlizeka ukwaziswa:



UBUFAKAZI BEZITHOMBE EZITHWETSHULIWE

Ngokwesibonelo: Ukuveza imfucuzo enobuthi, imiphumela yezinhlobo. Izithombe ezithwetshuliwe ezicacile ezihambisana nencazelo emfushanisiwe ingasiza ekufakeni ingcindezi kanye nokuhlizekela kokwaziswa.



IZINKATHAZO ZOMPHAKATHI

Zama njalo ukufaka iziphakamiso ezilulua nezinyathelo ezingathathwa yilunga lephalamende/yilunga lesishayamthetho esifundazweni, abasebenzi bamalunga noma iKomiti ezingasiza.



IMIBIKO YOCWANINGO

Okuvela emphakathini, ezinhlanganweni ezingekho ngaphansi kukahulumeni amayunivesithi njalo njalo. Hlinzeka amaphuzu aqokonyisiwe afushaniswa kwisembozo ukuze umfundi agxile kukho lapho efunda umbhalo.



IZIPHAKAMISO ZEMINQUMOMIGOMO

Landisa ngezindaba ezibe yimpumelelo zakweminye imiphakathi, izifundazwe noma amazwe aye azisebenzisa iziphakamiso zenu.



AMABALAZWE eSATELLITE noma ADWETSHWE NGESANDLA

ngokwesibonelo: aveza ukungena kwemayini ezindaweni zomphakathi. Ukuhlizekela kobufakazi obunjalo kuyoqinisa ukumangalela kwenu.



IMIBHALO

Abaqapheli abavela emphakathini, Bench Marks Foundation kanti futhi abahlizekelwe abamelele umphakathi iActionAid, MACUA, WAMUA neBLBA.



AMAKOMITI EPHALAMENDE

AmaKomiti ngokujwayelekile ahlangana kanye ngesonto uma iPhalamende lihlange. Iminingwane kanye nemibhalo emayelana nokusebenza kwabo itholakala kulama link alandelayo:

<https://pmg.org.za/committees>

<https://www.gov.za/about-government/parliamentary-committees>

<https://www.parliament.gov.za/minutes-proceedings>

<https://www.parliament.gov.za/taled-papers>

Ngezansi izibonelo zezinhlobo zezinkinga ezingahle zilethwe ekomitini ngalinye.

AMAKOMITI ASEPHALAMENDE

IKOMITI LESISHAYAMTHETHO YEZOKUMBIWA PHANSI NAMANDLA

Amalungelo okumba • Imiphumela yezemvelo • Ukuzuza • Isinxephezelo ngokulahlekelwa umhlaba • Amalungelo abasebenzi ezimayini • Izinkinga ezimayela namapulani ezenhlalakahle nemisebenzi • Ukususwa okuphoqiwe ezindaweni • Ukususwa kwamathuna • Ukwesatshiswa kwezishosho

IKOMITI LESISHAYAMTHETHO YEZEMVELO, AMAHLATHI NOKUDOBA

AmaPulani nezingqinamba kwezemvelo nokuphathwa kwezemvelo. • Ezempilo • Amanzi okuphuza, imifula nemifudlana, iziziba kanye namadamu • umhlaba • umoya • Ezolimo nemfuyo • Imvumo yezamanzi

IKOMITI LESISHAYAMTHETHO YEZEMPILO

Izifo kanye nezimo zempilo ngokwesibonelo: isifuba, ukugula okubangelwa yimisebe yeRadiation, umdlavuzo • I-asbestosis, i-silicosis, isifo sofuba, ingculaza/isandulela ngculaza nezinye izifo ezithathanelayo zocansi • i-Methemoglobinemia • Ukuntuleka kwezinsiza zezempilo

IKOMITI LESISHAYAMTHETHO KWEZOLIMO, UKULUNGISWA KOMHLABA NOKUTHUTHUKISWA KWEZINDAWO ZASEMAKHAYA

Ukulahlekelwa umhlaba wokulima namadlelo • Izinkinga ezimayelana nokubuyuselwa komhlaba emuva kokuthuthelwa endaweni entsha • Isimo sempilo semfuyo kanye nesivuno • Amaprojekthi okuthuthukiswa komphakathisa ahambisana nemayini

IKOMITI LESISHYAMTHETHO YEZOKUHLALISWA KWABANTU, AMANZI NOKUTHUTHWA KWENDLE

amaPulani nezingqinamba kwezemvelo nokuphathwa kwezemvelo. Ezempilo • amanzi okuphuza, imifula, imifudlana, amachibi, amadamu • umhlaba • umoya • Ukulima kanye nemfuyo • imvumo yezamanzi

IKOMITI LESISHYAMTHETHO YEZOKUBUSA NGOKUBAMBISANA NEZINDABA ZOMDABU

Ukuhlukunyezwa kwabaholi bendabuko • Izinkinga ezimayela nomhlaba wokhokho • Inkohlakalo eyenziwa abaholibendabuko

IKOMITI LESISHYAMTHETHO YEZOKUQASHA NABASEBENZI

Ukucwaswa ngokuphathelene nemisebenzi yase mayini • Ukwephucwa kwamalungelo abasebenzi • Izinkathazo ezimayelana nezempilo nokuphepha kwabasebenzi • Ukuhlukunyezwa kwabantu besifazane • Ukuntuleka kwamathuba emfundo nokuqeqeshwa okungaholela ekuqashweni emayini • Ukuguqukela ekuphileni emphakathini ongenayo iCarbon

IKOMITI LESISHYAMTHETHO YEZINDABA ZABESIFAZANE, EZEZINGANE NABAKHUBAZEKILE

Izingqinamba zabantu besifazane emayini, ngokwesibonelo. Ukuphela kwamanzi • Ukucwaswa nokuhlukunyezwa okubekiswe kubantu besifazane • Ukuphuphunyelwa izisu ngenxa yemisebe yeRadiation • Izinkinga zempilo ezibangelwa amanzi angcolile • Umsebenzi wokunakekela izisebenzi zasemayini ezigulayo ongakhokhelwa • Ukuntuleka kwemisebenzi yabantu ababasha kanye nabantu abakhubazekile • izinkinga ezikoleni

IKOMITI LESISHAYAMTHETHO LEMFUNDO YAMABANGA APHANSI

Ukususwa noma ukusongela kokususwa kwezikole • Ukuqhuma kwezimayini okuphazamisa ukufunda noma okulimaza amabhilidi ezikole • Ukungcoliswa kwamanzi ngenxa yezimayini- amanzi eduzane nezikole kudingeka ahlolwe njalo

IKOMITI LESISHYAMTHETHO YEZOKUXHUMANA KWAMAZWE ANGAPHANDLE

Izinkathatho ezimayelana nezinkampani zaphesheya zingaxoxwa kulelikomiti

IKOMITI LESISHYAMTHETHO YEZOHWEBU NEZIMBONI

Izinkathatho ezimayelana nezinkampani zaphesheya zingaxoxwa kulelikomiti

IKOMITI LESISHAYAMTHETHO LAMAPHOYISA

Ukuhlukunyezwa nokwesatshiswa amaphoyisa • ukukhohlakala kwamaphoyisa

IKOMITI LESISHYAMTHETHO YEZEMISEBENZI KAHULUMENI NENGQALASIZINDA

Amanzi amadamu amaningi asetshenziswa yizimayini anciphe amanzi omphakathi • Izinkinga zasemayini ezimayelana nemigwaqo kanye namabhuloho

AMAKOMITI EMKHANDLU KAZWELONKE WEZIFUNDAZWE

IKOMITI ELIKHETHEKILE LOKUTHUTHUKISWA KOMHLABA, E ZEMVELO, EZOKWAMBIWA PHANSI KANYE NAMANDLA

Amalungelo okumba • Imiphumela yezemvelo • Ukuzuza • Isinxephezelo ngokulahlekelwa umhlaba • Malungelo abasebenzi ezimayini Izinkinga ezimayela namapulani ezenhlalakahle nemisebenzi • Ukususwa okuphoqiwe ezindaweni • Ukwesatshiswa kwezishosovu

IKOMITI ELIKHETHEKILE LEZEMPILO NEZENHLALAKAHLE

Izifo kanye nezimo zempilo ngokwesibonelo: isifuba, ukugula okubangelwa yimisebe yeRadiation, umdlavuzwa, i-asbestosis, i-silicosis, isifo sofuba, ingculaza/isandulela ngculaza nezinye izifo ezithathanelayo zocansi • i-Methemoglobinemia • Ukuntuleka kwezinsiza zezempilo

KOMITI ELIKHETHEKILE KOBUHOLI OBUBAMBISENE NEZAMASIKO, AMANZI NOKUTHUTHWA KWENDLE NOKUHLALISWA KWABANTU

Ukuhlukunyezwa kwabaholi bendabuko • izinkinga ezimayela nomhlaba wokhokho • inkohlakalo eyenziwa abaholibendabuko ukulimala kwezindlu • Ukuntuleka kwezisekelo zezindlu ezindaweni okuthuthelwe kuzo • Amanzi angcolile • Ukwakhiwa okungekukhle kwezindlu zangasese kanye zekhiwo omphakathini othuthele endaweni entsha • ezinye izinkinga ngezindlu

IKOMITI ELIKHETHEKILE KWEZOKUTHUTHA IMISEBENZI YOMPHAKATHI KANYE NEZAKHIWO

Amanzi amadamu amaningi asetshenziswa yizimayini anciphe amanzi omphakathi • Izinkinga zasemayini ezimayelana nemigwaqo kanye namabhuloho

IKOMITI ELIKHETHEKILE KWEZEMFUNDO, EZOBUCHWEPHESHE, EZEMIDLALO, EZOBUCIKO NA-MASIKO

• Ukususwa noma ukusongela kokususwa kwezikole • Ukuqhuma kwezimayini okuphazamisa ukufunda noma okulimaza amabhilidi ezikole • Ukungcoliswa kwamanzi ngenxa yezimayini- amanzi eduzane nezikole kudingeka ahlolwe njalo

IZINDLELA EZISEMTHETHWENI ZOKUSEKELA UMBONO

IZINDLELA EZIHLELEKILE ZOKUFAKA IZIPHAKAMISO EKOMITINI

Isiphakamiso kumelwe kube yilesa esicacile futhi esiqondakala kalula emalungwini ekomiti

Isiphakamiso singakwazi ukwesekelwa yisethulo esikhulunywe ngomlomo

Ukwaziswa okwengeziwe kungatholaka kulengosi <https://www.parliament.gov.za/submissions>

UKWAZISWA OKUBALULEKILE OKUMELWE KUFACWE ESIPHAKAMISWENI ESIBHALIWE:

- *Igama lekomiti eliphelele*
- *Igama lomthethosivivinywa noma Udaba*
- *Igama nesikhundla somuntu ofaka isiphakamiso*
- *Igama lenhlangano*
- *Faka nesicelo sokhuluma nekomiti uma unesifiso sokwenza kanjalo*

Okuphakathi okubhaliwe kwisiphakamiso:

- *Gxila esihlokwini okhononda ngaso kunokuba ungahloniphi ngokumangalela abantu*
- *Khuluma ngokucacile uhlale endabeni ugweme ukwanda kakhulu*
- *Uma usulidlulisele iphuzu lakho qhubekela phambili*
- *Sebenzisa ubufakazi ukusekela ukuhlaziya kwakho futhi ungabhekisa kwizazi, kumalungu omphakathi, ezifundweni zezemfundo, kwamanye ama-NGO, imibhalo kahulumeni nemibiko ngalolo daba noma umthethosivivinywa*
- *Sebenzisa ilimi oluhlazekile nolunenhlonipho*
- *Qiniseka ukuthi isiphakamiso sakho sihambisana nesihloko noma umthethosivivinyo*
- *Isiphetho: Fingqa amaphuzu ayinhloko esiphakamiso sakho*
- *Iziqondiso: Hlinzeka imibono ngokuqokethwe umthethosivivinyo noma okuthile okumelwe kwenziwe yikomiti mayelana nesihloko esithile*

ISIPHAKAMISO ESIKHULUNYWE NGOMLOMO

- *Loluholo lweziphakamiso lwenziwa ukweseka isiphakamiso esibhaliwe*
- *Unobhala wekomiti uyohlazekela ubude besikhathi besiphakamiso esikhulunywe ngomlomo*
- *Izinsiza ezibukwayo ezinjengePowerpoint Presentation zingasetshenziswa ukucacisa iphuzu*
- *Kungasetshenziswa noma yiziphi izilimi ezisemthethweni waseNingizimu Afrika kodwa unobhala wekomiti kumelwe aziswe kusenesikhathi kuze kulungiselelwe umhumushi.*
- *Ividiyo, okulalelwayo noma okubhaliwe kokunye okuthunyiwe kungacwaningwa ukuze kusizakale kulungiselele*

UKUHLANGANYELA EKULALELENI UMPHAKATHI

Ukulalelwa komphakathi kuqhutshwa amakomiti kuzwelonke nasesifundazweni. Ngokuvamille kuye kugxilwe kumthethosivivinyo kodwa futhi nezinye izihloko ezinjengokuphathwa kwezimali zikaHulumeni. Izinhlangano eziningi ziyezahlanganyela ekulaleleni umphakathi amaNGO yiActionAid South Africa, Bench Marks Foundation kanye neBafokeng Land Buyers' Association.

UKUFAKA ISIKHALAZO

Ukufaka isikhalazo esisemthethweni sokuthi singenelele endabeni. Ngokomthethosisekelo "Wonke umuntu unelungelo lokubuthana nabanye, ukubhikisha, ukuphiketha nokwethula izicelo ezibhaliwe ngokuthula futhi kungahlonyiwe."

UKUBHALA NOKUFAKA UHLU LWEZIKHALAZO

Izikhhalazo kumelwe zihlanganiswe ngokucophelela. Nazi izinyathelo ongazithatha ukuqinisekisa ukuthi isikhhalazo sakho samukelwe unobhala wasePhalamende.



VEZA NGOKUCACILE INDABA

Ngaphambi kokuba uqale ngesikhhalazo sakho qiniseka ukuthi ucacisile indaba ofuna uhulumeni angenelele kuyo.



CACISA ISIKHALO SAKHO KANYE NOMAMUKELI

Faka igama neminingwane yomuntu ofaka isikhhalazo ubhale ngokucacile ukuthi siyakubani.



FAKA ISIHLOKO

Bhala ngokucacile ukuthi isihloko sakho simayelana nani.



IZILIMI

Kungasetshenziswa noma yiziphi izilimi ezisemthethweni waseNingizimu Afrika.



UKUSAYINWA

Lusayindwe yilowo/yilabo abakhalazayo uqobo (ngaphandle uma uSomlomo noma uSihlalo enquma ngenye indlela).



INDLELA OKUBHALWA NGAYO

Izikhhalo kumelwe zibhalwe ngokucophelela. Kungakusiza ukucela ilungu lePhalamende noma abasebenzi belungu bakusize ngendlela olubhalwa ngayo.



THOLA UKUXHASWA YILUNGA LEPHALAMENDE

Kudingeka ilunga lephalamende elizoxhasa isikhhalazo sakho nenxa yokuthi zonke izikhhalazo kumelwe zethulwe ngokusemthethweni.



UKUFAKA UHLU LWEZIKHALAZO

Uhlu lwakho lwezikhhalazo luzokwethulelwa uNobhala wePhalamende ukuze alubuyekeze bese eqinisekisa ukuthi indlela olubhalwe ngayo ngefanelekile nokuthi lokho olukuqukethe kulungile yini ngaphambi kokuthi luye weSishayamthetho Sikazwelonke noma kuMkhandlu Kazwelonke Wezifundazwe.

INDLELA YOKUSEBENZA KWESISHAYAMTHETHO

Uma kunomthetho ozokwethulwa ubizwa ngokuthi umthethosivivinyo. Umthetho sivi-vinywa wethulwa ePhalamende. Ngaphambi kokuba umthethosivivinyo ulethwe ephalamende kungahle kube nesigaba sokuqala nesigaba sesibili somthetho sivivinyo.

ISIGABA SOKUQALA SOMTHETHO SIVIVINYO (GREEN PAPERS)

Isigaba sokuqala siveza izikhalazo ezihambisana nesigaba sokuqala. Siyashicilelwa ukuze umphakathi uveze uvo lwayo.

ISIGABA SESIBILI SOMTHETHO SIVIVINYO (WHITE PAPERS)

Isigaba sesibili siyisigaba sokuqala esibukeziwe, amaluguna ephalamende angathumela okushintshiwe ebese isigaba sesibili sibuyiselwe emuva.

UKWETHULWA KOMTHETHOSIVIVINYWA EPHALAMENDE

Isishayamthetho sikazwelonke:
Yonke imithetho sivivinyo engeyona eyesesifundaze yethula lapho ngaphansi kwesigaba 75 somthetho sivivinywa

uMkhandlu Kazwelonke Wezifundazwe:
Umthetho sivivinyo uyethulwa kulomkhandlu uma kuthinta isifundazwe noma isifundazwe esithile ngokuqondile, ngaphansi kwesigaba 76 somthetho sivivinywa

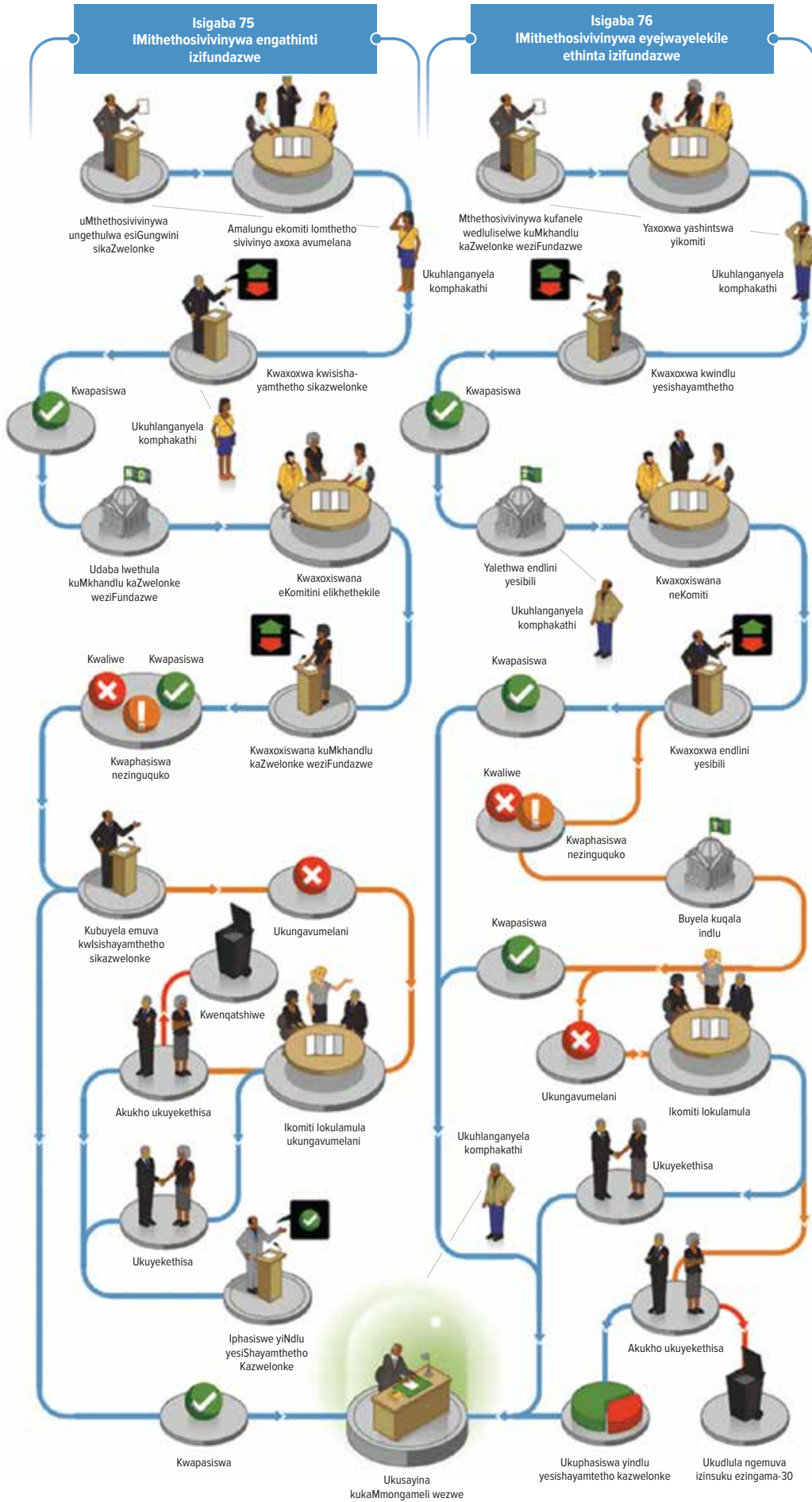
Lapho sekwethuliwe kwindlu efanelekile kudluliselwa ekomitini elifanele ukuze kucatshangelwe ebese kushicilelwa kwiGovernment Gazette.

iKomiti licubungula liphinde lichibiyele iMithethosivivinywa, futhi .

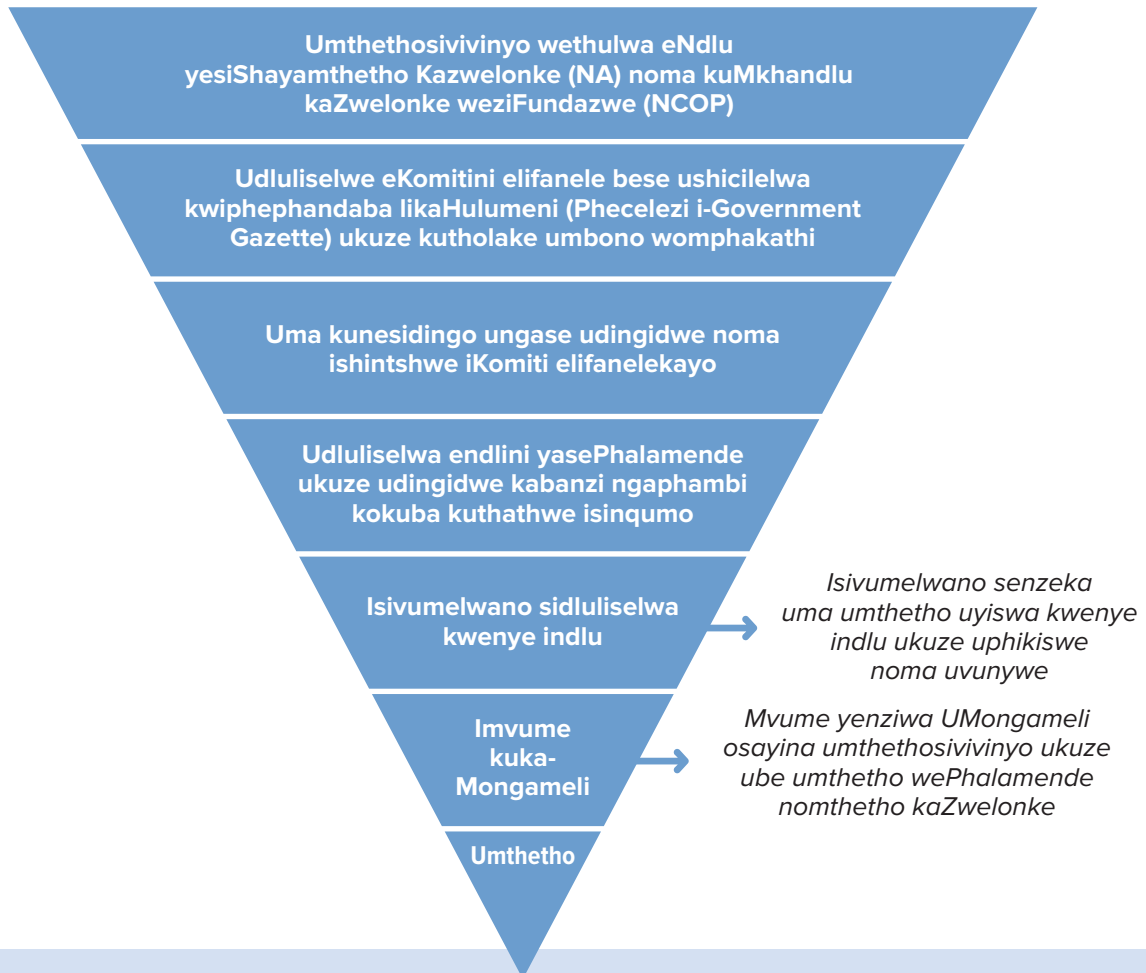
Umthethosisikelo ubuyela emuva kuMkhandlu Kazwelonke Wezifundazwe noma kwIsishayamthetho sikazwelonke ukuze kube nenkulumo mpikiswano nokuvotelwa komthethosisikelo.

Umthethosivivinyo uyiswa kwenye indlu yasePhalamende ukuze ubuyekezwe bese uvotelwa.

Umthethosivivinyo udluliselwa kuMongameli ukuze ugunyazwe (ukusayina).



WENZIWA KANJANI UMTHETHO ENINGIZIMU AFRIKA (ISHAYAMTHETHO KAZWELONKE)



ISheduli 4 yoMthethosisekelo waseNingizimu Afrika inohlu lwezindawo lapho kokubili iPhalamende LikaZwelonke nePhalamende LweZifundazwe lungashaya imithetho.

Luhlukene ngezingxenye ezimbili: Ingxenye A ihlanganisa izindawo ezinjengamahlathi, ezolimo, izindaba zamasiko, imvelo nokuphathwa kwezinhlekelele, umthetho wezomdabu nomthetho wesintu. Ingxenye B ihlanganisa izindawo njengokungcoliswa komoya, izimiso zokwakha, ezokuvakasha nezinsizakalo zikaMaspala zempilo, kuhlangukane nezinsizakalo zamansi nokuththwa kwendle.

ISheduli 5 yoMthethosisekelo inohlu lwezindawo ezikhethekile zoMthethosisekelo Wesifundazwe Onekhono. Lezi izindawo ezingabalulekile zomMthethosisekelo kodwa zihlanganisa ukungcola komsindo, izindawo zokulahlwa udoti, nezindaba zamasiko ezombusazwe.

Okunye ukwaziswa kwalezizihloko kungatholakala kumawebhusayithi alandelayo:

<https://www.gov.za/documents/constitution-republic-south-africa-1996-schedule-4-functional-areas-concurrent-national>

<https://www.gov.za/documents/constitution-republic-south-africa-1996-schedule-5-functional-areas-exclusive-provincial>

IZINSIZA ZAKWI-INTERNET

- 1 I-PARLIAMENTARY MONITORING GROUP (PMG)** inengosi ewusizo (www.pmg.org.za) yemibuzo emayelana nePhalamende, izinqubo zasePhalamande, amaMinithi emhlangano njl.

 - Izinsiza zika-PMG zisiza ngenqubo yomthetho: <https://pmg.org.za/page/legislative-process>
 - I-dokumenti ebuyekeze inqubo yomthetho e-Phalamende ingatholakala la: <http://pmg-assets.s3-website-eu-west-1.amazonaws.com/docs/100903legislative-edit.pdf>
 - Imithetho ezolandela nezicelo eziyiswa e-Phalamende zingatholakala la: <https://pmg.org.za/page/parliamentary-programme>
 - Imibiko yeKomiti iyatholakala la: <https://pmg.org.za/taled-committee-reports/>
- 2 IPHALEMENDE LIKAZWELONKE** inezinkundla zokuxhumana ezilandelayo:

 - IPhalamande lisakazwa kuDSTV 408
 - Twitter: <https://twitter.com/ParliamentofRSA> (Handle: @ParliamentofRSA)
 - Youtube: <https://www.youtube.com/user/ParliamentofRSA>
 - Facebook: <https://www.facebook.com/ParliamentofRSA>
 - The National Parliament's website is <https://www.parliament.gov.za/>
- 3 UMTHETHOSISEKELO waseNINGIZIMU AFRIKA** unemningwane ebalulekile emayelana nomthetho, inqubo yazo nokushawa kwemthetho. Kungatholakala lapha: <https://www.gov.za/documents/constitution/constitution-republic-south-africa-1996-1>
- 4 AMAWEBHUSAYITHI ESISHAYAMTHETHO SEFUNDAZWE**

 - Eastern Cape Provincial Legislature: <http://www.eclegislature.gov.za/>
 - Free State Provincial Legislature: <http://www.fsl.gov.za/>
 - Gauteng Provincial Legislature: <http://gpl.gov.za/>
 - KwaZulu-Natal Provincial Legislature: <https://kznlegislature.gov.za/>
 - Limpopo Provincial Legislature: <http://www.limpopoleg.gov.za/>
 - Mpumalanga Provincial Legislature: <http://www.mpuleg.gov.za/>
 - North West Provincial Legislature: <https://nwpl.gov.za/>
 - Northern Cape Provincial Legislature: <https://www.ncpleg.gov.za/>
 - Western Cape Provincial Legislature: <https://www.wcpp.gov.za/>
- 5 CLIMATE REALITY PROJECT** inezisetshenziswa ezinhle kakhulu ngaphansi kwephrojekthi yayo ye-Action 24: <http://climatereality.co.za/resources-action-24/>
- 6 I-DULLAH OMAR INSTITUTE** UDULLAH OMAR INSTITUTE e-University of the Western Cape unezinsizaku-sebenza ezinhle kakhulu ezibandakanya Parlybeat okuyi-newsletter emboza okwenzekayo ePhalamende <https://dullahomarainstitute.org.za/women-and-democracy/parlybeat>

 - Parliament Watch or Parlywatch, obukeza umsebenzi wePhalamende unemibiko: <https://dullahomarainstitute.org.za/women-and-democracy/parliament-watch>
 - Putting People in the People's Parliament – Ukwaziswa okwengeziwe kungatholaka kulengosi: <https://dullahomarainstitute.org.za/women-and-democracy/putting-people-in-the-peoples-parliament>
- 7 iCENTRE yeAPPLIED LEGAL STUDIES (CALs)** eUniversity yase Witwatersrand inokwaziswa okuyiningi <https://www.wits.ac.za/cals/our-programmes/environmental-justice/>
- 8 iLAND & ACCOUNTABILITY RESEARCH CENTRE (LARC)** eUniversity yaseCape Town inokwaziswa mayelana nezikhaziso: <http://www.larc.uct.ac.za/submissions>



act:onaid



FORDFOUNDATION



HEINRICH BÖLL STIFTUNG
SOUTHERN AFRICA



Lokhu kwaziswa kuye kwakhiswa
ngosizo lweEuropean Union



IANRA
International Alliance on Natural Resources in Africa

International Alliance on Natural Resources in Africa (IANRA)

The Main Change, Office 301C, 20 Kruger Street, Johannesburg 2094, South Africa

Website: www.ianra.org | Twitter: @lanraAfrica

Email: info@ianra.org | Phone: +27 (0)11 056 9748

Ngaphandle kwemithetho enobulungisa nephumelelayo, shiya okumbiwayo kwendalo kwethu.